

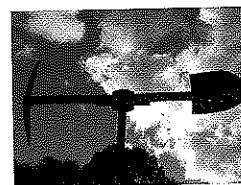
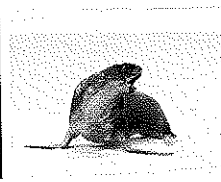
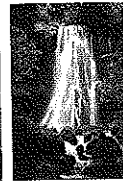
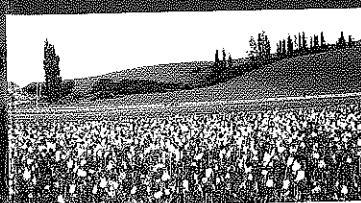



Clutha Country
where everyone says hello

VISITING CLUTHA
NEW ZEALAND

From the moment you enter Clutha Country to the point you leave, Clutha has something truly remarkable to offer.

Whether you are passing through the rolling hills, the native forests or remote beaches; take the time to relax and enjoy.



Visiting Clutha Country is about feeling alive

It's about getting back to nature

It's a field of tulips and new born lambs in spring

It's stopping for a farmer moving a mob of sheep across the main road

It's meandering the country's highways and byways and catching the locals at play or work

It's Anthem House and historic goldfields

It's crossing the Clutha, New Zealand's largest volume river on a punt!

Its sand dunes and walking an entire beach all to yourself

It's hidden wonders and country hideaways

It's one set of traffic lights - good luck finding them!

It's Cathedral Caves, cascading waterfalls, dense rainforest and indigenous wildlife

It's being at peace with nature and the great outdoors

It's world class fishing waters

It's trying to remember what day of the week it is, but then realising you don't care as you don't have a worry in the world

It's rugged coastlines, rolling green hills and clean rivers

It's long light summer evenings and remarkable golden sunsets against the tumble of cliffs and river

It's waking in the morning to the sound of birds singing in the trees, to a crisp dew on a freshly cut expansive lawn

It's about yarning to the people whose lifestyles come from the beautiful lush green countryside

It's stopping, relaxing and getting to know the locals

It's about putting the slow motion button on

It's about an hour from Dunedin

It's about wanting to come back...

Leave the rest of the world behind, come experience the welcome and the wonders of Clutha Country.



Our spectacular scenery and wildlife, across a myriad of landscapes from coastal rocky shores and sandy beaches, wetlands to rolling green hills and Blue Mountains, offers a magnificent holiday, full of friendly people. It's time to relax and enjoy what we have to offer.

Location

Situated on the South East coast of New Zealand's South Island, dotted with farmland and rural towns, Clutha Country's population is less than 18,000 people; some of the friendliest in the country. Take the time to discover Clutha Country, its picturesque surroundings and meet the friendly locals, whose real sense of community is typical of the South.

Travel times and distances

Travelling distances throughout Clutha Country (kilometres)

	Balclutha	Clinton	Milton	Waihola	Lawrence	Beaumont	The Catlins/Owaka	Kaitangata	Tapanui
Balclutha	—	31	25	42	56	63	32	12	62
Clinton	31	—	56	73	87	94	49	43	30
Milton	25	56	—	18	37	56	57	37	87
Waihola	42	73	18	—	55	74	75	55	105
Lawrence	56	87	37	55	—	19	88	68	58
Beaumont	63	94	56	74	19	—	95	75	39
Owaka/The Catlins	32	49	57	75	88	95	—	44	79
Kaitangata	12	43	37	55	68	75	44	—	74
Tapanui	62	30	87	105	58	39	79	74	—

Getting here



Getting to Clutha Country is a breeze. Seen as off-the-beaten-track, the experienced traveller will vouch for this road less taken as well worth the effort to capture the beauty of the people and landscape. An easy 40 minute drive south from Dunedin International Airport will see you in the heart of Clutha Country at Balclutha; the commercial centre. From here you can travel to the outer stretches of the area. There are touring routes and suggested itineraries as guidelines to what you can do throughout the region. See overleaf for more details.



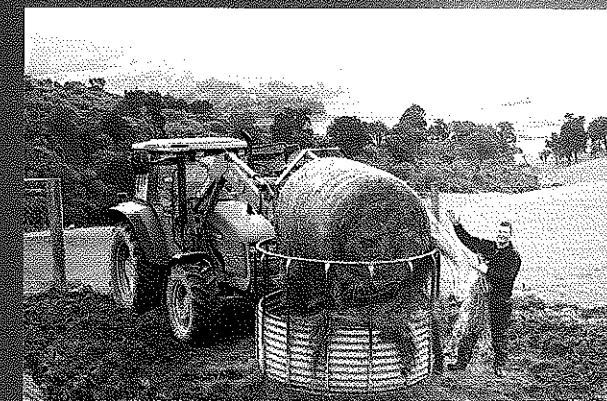
Clutha Country Website Gallery

www.cluthacountry.co.nz

The gallery is a collection of photos taken by locals and visitors all saying "hello" Clutha Country Style.

Add your photo and vote for your favourite

Note: Photos will appear on approval by the webmaster



Clutha i-Site

Internet access available

Address: 4 Clyde Street, Balclutha

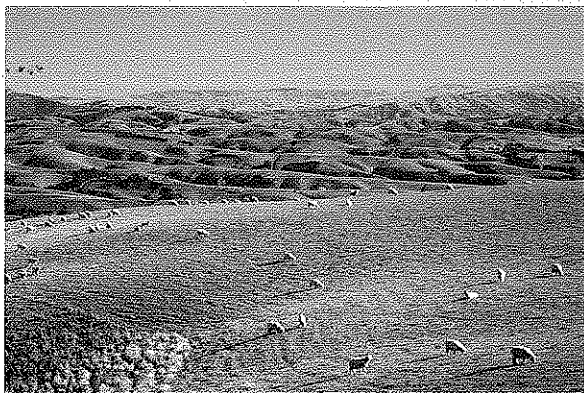
Phone: +64 3 418 0388

Fax: +64 3 418 1877

Email: clutha.vin@cluthadc.govt.nz

Clutha Country's Goldfield Heritage

BALCLUTHA – MILTON – LAWRENCE – TUAPEKA – BEAUMONT



Farmland, Lawrence

Inland Clutha Country has a lot on offer, being the home of the Tuapeka Goldfields and the birthplace of the New Zealand Gold Rush. With that comes a pan full of history and your chance to get the golden glint in your eye and make your fortunes.

From Balclutha, travel through the tree-lined Manuka Gorge, stop for a walk and picnic at Mt. Stuart Tunnel. As you continue on, the countryside opens up into picturesque rolling green pastures, ideal for sheep, beef, cattle and deer farming.

Soak up the history through the architecture from the gold mining era in Lawrence, where Gabriel Read discovered gold in what is now known as Gabriel's Gully.

View the protected archaeological Chinese Camp site with plans for extensive development.

From Beaumont Scenic Reserve view the Clutha River which has a good example of a friendly, country pub. The clanking Beaumont Bridge is the longest and first single span structure in the Southern Hemisphere.

Rest and replenish in Lawrence before, during or after exploring this Goldfield Heritage route.

The Catlins – The natural retreat in Clutha Country

KAKA POINT – OWAKA – PAPATOWAI – WAIKAWA



Native Bush, The Catlins

This wild stretch of coast line offers breathtaking natural wonders. This land of isolated beaches and rugged coastline has expansive areas of forest and is one of the last remaining pristine stands of native bush in New Zealand. Dense rain forest gives way to open shrub country, passing through deep valleys, rocky coastal bays, inlets and estuaries. Explore the limitless inland and coastal walks and attractions.

Kaka Point, the gateway to the Catlins, is a small coastal town. Walk the easy Bush Track through coastal remnant forest.

Nugget Point and Lighthouse, a historic marine reminder with wildlife such as fur seals, sea lions and sea birds including the world's rarest penguin, the yellow-eyed penguin (hoiho). Walk 20 minutes to take in the lighthouse.

Drive on to **Owaka** to take in the Catlins River Walk, resupply or simply put your feet up.

Walk 10 minutes being surrounded by bush to the Purakaunui Falls, which drop over 20 metres. Visit at night to see the glow worms.

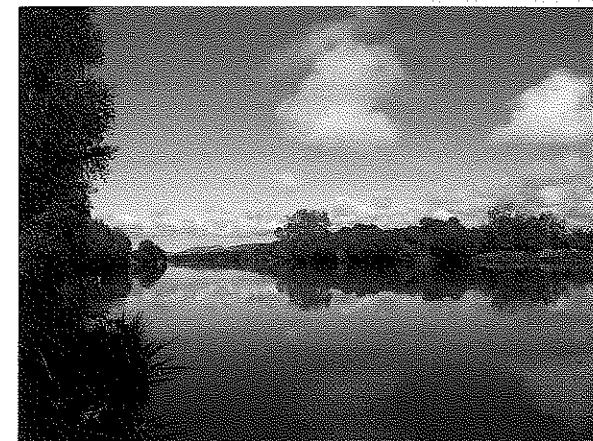
Head down to Papatowai for dramatic native bush and seaside scenery - stop at Florence Hill. Look out for the views over Tautuku Bay.

See and explore the spectacular Cathedral Caves at low tide. Hear the resounding echoes of the sea play in their chasms.

Curio Bay holds geological significance for its 180 million year old fossilised trees in coastal bedrock.

Clutha Country's Paradise for Hunting & Fishing

BALCLUTHA – CLINTON – TAPANUI – BEAUMONT



The Clutha River

Explore Balclutha's surrounds for salmon and trout fishing, hunting or the great kiwi delicacy of whitebait, at areas such as Kaitangata.

Or take the inland route through rolling pastures to Clinton. Explore the fishing and hunting opportunities, or continue on to Tapanui to access the recreational park of the Blue Mountains.

Try fishing the Clutha, Waipahi, Pomahaka and Catlins Rivers for internationally renowned trout fishing. To increase your chances, take a guided fishing tour for some locals' best kept secrets.

Visit the Blue Mountains or Whisky Gully for hunting pig, deer or possum. This is the first and largest area to be gazetted as a recreational hunting area.

Activities in the region also include tramping or mountain biking amongst the forests and river valleys, or try one of the finest 18-hole golf courses south of Dunedin at the Blue Mountains.

Stock up or put your feet up in Balclutha or any of the towns along the way.

For more information on these touring routes see our website itinerary
www.cluthacountry.co.nz



Clutha Country is a combination of truly unique areas, each of which have in common one distinct feature – the people everyone says hello!

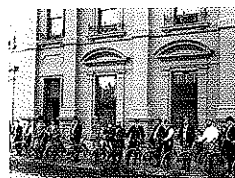
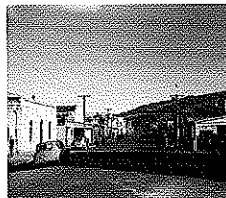
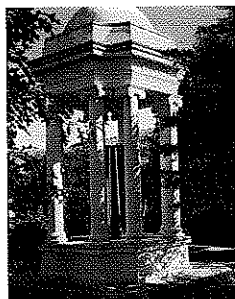
History

Clutha Country's heart is the river that flows through it, from the inland mountains down to create fertile plains and deltas and then spill onto a magnificent coastline rich with sea life.

With the sea and rivers plentiful of fish; early Maori travelled extensively and settled throughout the area.

Captain Cook and his self-sufficient pioneers fought the battles of the notorious coastline, now scattered with shipwrecks, and the vast and dense scrubland and native forest to carve a living from the landscape.

During the gold rush and sawmilling eras the whole district rattled with the sound of diggers and wagon trains as trade routes were established through the plains and across the Clutha River.



Information Centres

Clutha i-Site

Internet access available
Address: 4 Clyde Street, Balclutha
Phone: +64 3 418 0388
Fax: +64 3 418 1877
Email: clutha.vin@cluthaqdc.govt.nz

Catlins Information Centre & Museum

Address: 20 Ryley Street, Owaka
Phone: +64 3 415 8371
Fax: +64 3 415 8371
Email: info@catlins-nz.com

Milton Information Centre & Museum

Internet access available
Address: 53 Union Street, Milton
Phone: +64 3 417 7480
Fax: +64 3 417 7480
Email: miltoninfo@xtra.co.nz

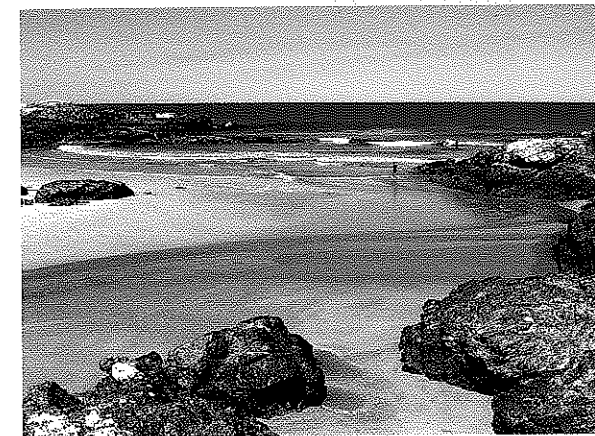
Lawrence Information Centre & Museum

Address: 17 Ross Place, Lawrence
Phone: +64 3 485 9222
Email: lawrence.infocentre@xtra.co.nz

Telephone for opening hours

Clutha Country's Coastal Scenic Wetlands Tour

WAIHOLA – TAIERI MOUTH – MILTON – TOKO MOUTH
– KAITANGATA – LAWRENCE



Bull Creek, near Milton

Clutha Country is a coastal and wetlands paradise.

Lake Waihola, New Zealand's furthestmost inland tidal lake is famous for its reflections and black swans.

The renowned Sinclair Wetlands and Visitor Centre is a haven to rare birds and is rich in natural and cultural history.

Nestled in the folds of the coastline is the seaside fishing village of Taieri Mouth, with its impressive beaches, cliffs, island and boat tours.

Explore the Akatore Faultline and Wetlands and marvel at the steep rocky escarpment and rare, native bird and plant species.

See the small Toko Mouth and Bull Creek coastal settlements for truly quaint seaside living.

Kaitangata is great for whitebaiting, trout and salmon fishing. Its rich coal mining heritage has left the area dotted with disused mines and monuments.

From Lawrence explore the water races and remnants of the goldrush days on the way to Lake Mahinerangi.

Try mountain biking the Government Track at the Waipori Falls and River Gorge.

Rest and replenish in Milton before or after exploring these coastal and inland wetland areas.